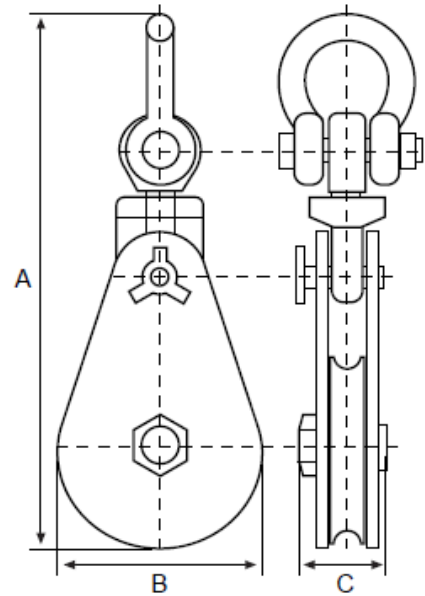




2t - 50t CAPACITY

- Heavy duty construction
- Fitted with grease nipples
- Swivel Shackle head fitting
- Conform to AS2089-2008



WLL	SHEAVE DIAMETER	WIRE ROPE DIAMETER	A mm	B mm	C mm	UNIT WEIGHT
2 t	75mm	8 - 10mm	290	83	75	4kg
4 t	150mm	10 - 13mm	415	160	75	9kg
8 t	200mm	16 - 18mm	530	210	95	19kg
10 t	250mm	18 - 20mm	680	260	115	35kg
12 t	250mm	20 - 22mm	680	260	115	35kg
15 t	300mm	24 - 26mm	890	310	135	65kg
22 t	355mm	26 - 30mm	960	365	140	90kg
30 t	500mm	32 - 35mm	1230	520	155	210kg
50 t	600mm	44 - 52mm	1585	630	210	400kg

WE TAKE THE PRESSURE OUT OF YOUR PROJECT!